

4125

SHALLOW WATER SIDE SCAN SONAR SYSTEM

FEATURES

- Ultra high resolution for easy identification of targets
- Lightweight for one person deployment
- Choice of either a 400/900 kHz or 600/1600 kHz dual simultaneous frequency towfish
- Standard heading, pitch, roll and depth sensors
- Runs on AC or DC
- Optional quick change tow bracket for ship hull inspections

APPLICATIONS

- Search and Recovery
- Shallow Water Surveys
- Port Security
- Hull Inspections
- Channel/Clearance Surveys



EdgeTech's 4125 Side Scan Sonar System was designed with both the Search & Recovery (SAR) and shallow water survey communities in mind. The 4125 utilizes EdgeTech's Full Spectrum® CHIRP technology, which provides higher resolution imagery at ranges up to 50% greater than non-CHIRP systems. This translates into more accurate results and faster surveys, thus cutting down on costs.

Two dual simultaneous frequency sets are available for the 4125 depending on the application. The 400/900 kHz set is the perfect tool for shallow water survey applications, providing an ideal combination of range and resolution. The 600/1600 kHz set was designed specifically for SAR and port security applications where ultra high resolution imagery is required in order to identify small targets.

There are two towfish options available for the 4125 System; one for shallow operation in max depths of 50m and one for deeper operation in max depths of 200m. Both towfish are available with either frequency set and are constructed of rugged stainless steel.

The 4125 system can be powered by both AC and DC for added versatility and is delivered in portable rugged cases for transport from site-to-site. As is standard with all of EdgeTech's towed side scan systems, the 4125 comes with a safety recovery system which will prevent the loss of a towfish if it becomes snagged on an obstacle during a survey.

A 4125 System comes with a choice of towfish and a portable water resistant topside processor including a splash-proof laptop computer running EdgeTech's DISCOVER software. A 50m tow cable is included as standard with additional lengths also available.



For more information please visit EdgeTech.com

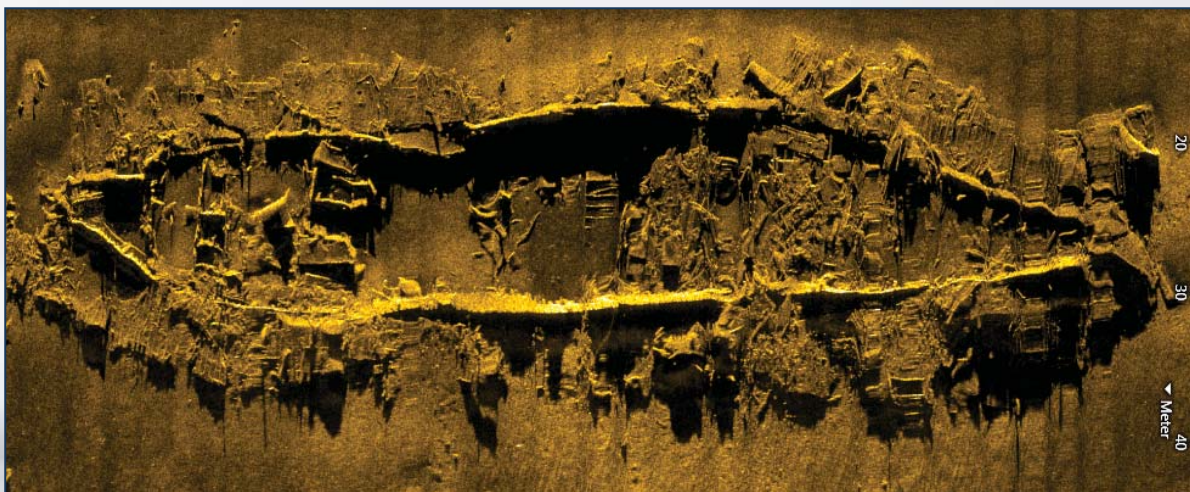
info@EdgeTech.com | USA 1.508.291.0057

4125

SHALLOW WATER SIDE SCAN SONAR SYSTEM

KEY SPECIFICATIONS

SONAR		
Frequencies (Dual Simultaneous)	Choice of either a 400/900 kHz or 600/1600 kHz towfish	
Pulse Type	EdgeTech's Full Spectrum® CHIRP (user selectable CW pulses)	
Operating Range	150m @ 400 kHz, 75m @ 900 kHz; 120m @ 600 kHz, 35m @ 1600 kHz	
Horizontal Beam Width	0.46° @ 400 kHz, 0.28° @ 900 kHz; 0.33° @ 600 kHz, 0.20° @ 1600 kHz	
Vertical Beam Width	50°	
Resolution Across Track	400 kHz: 2.3 cm, 900 kHz: 1.5 cm, 600 kHz: 1.5 cm, 1600 kHz: 0.6 cm	
TOWFISH	4125 Shallow Towfish	4125 Deep Towfish
Material	Stainless Steel	
Diameter	9.5 cm (3.75 inches)	
Length	97 cm (38 inches)	112 cm (44 inches)
Weight in Air	15 kg (34 pounds)	20 kg (44 pounds)
Standard Sensors	Roll, Pitch, Heading, Pressure (Depth)	
Max Operational Depth	50m	200m
Tow Cable Length	50m Kevlar cable included, additional lengths available	
SPLASH-PROOF TOPSIDE PROCESSOR		
Power Input	12-24 VDC or 115/230 VAC, 50/60 Hz	
Connections	AC, DC, Ethernet (to laptop), Towfish	
Hardware	Ruggedized splashproof laptop	
Operating System	Windows® XP	
Acquisition Software	EdgeTech DISCOVER	



For more information please visit EdgeTech.com

info@EdgeTech.com | USA 1.508.291.0057